

# 7S<sup>3</sup>

## Modular Airway Trainer



**HIGH FIDELITY**

### Features and Solutions

- Unparalleled Fidelity and Realism
- Modular Construction Supports Ease of Maintenance and Expandable Portfolio of Pathologies
- Realistic Biomechanics of the Jaw, Neck, Tongue, and Epiglottis
- Supports Sellick Maneuver Training
- Realistic Mass Distribution Reinforces Proper Patient Positioning Techniques
- Supports Both Oral and Nasal Intubation
- Supports Confirmation of Intubation Via Auscultation and Chest Excursion (Chest Rise)
- Accurate Simulation of Common Intubation Errors Such as Right Mainstem Intubation and Esophageal Intubation and Dental Trauma



### 7-SIGMA Simulation Systems

2843 26th Ave. South  
Minneapolis, MN, 55406

Toll Free Numbers:

888-722-7224 (P) | 844-898-4755 (F)

[www.7-sigma.com/7-s3](http://www.7-sigma.com/7-s3)

## Accessories

### Replacement Teeth

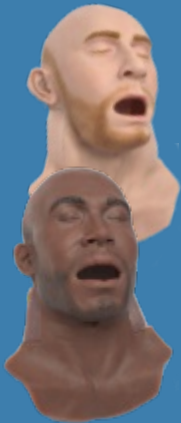


Lower  
560.770.1004

Upper  
560.770.1002

**Airway Lubricant**  
365.770.1001

**Face Skins**  
(Coming Soon)



@7S3USA



@7SIGMAMPLS



## Modular and High Fidelity Torso Airway Trainer:

The 7S<sup>3</sup> Modular Airway Trainer modular construction allows for a versatile training system that can train users on a multitude of pathologies and complications, better preparing users for the less-than-ideal conditions other training systems do not support.

- 770001 - Caucasian Torso Airway Trainer with Advanced Airway
- 770003 - African American Torso Airway Trainer with Advanced Airway
- 770004 - Caucasian Torso Airway Trainer with Intermediate Airway
- 770005 - African American Torso Airway Trainer with Intermediate Airway

### 7S<sup>3</sup> Airways

**Complete Airway**  
(Upper Portion Shown)

570.770.1001  
Caucasian Complete Airway Assy. Adv.

570.770.3001  
African American Complete Airway Assy. Adv.

570.770.4001  
Caucasian Complete Airway Assy. Int.

570.770.5001  
African American Complete Airway Assy. Int.



**Base Airway**  
(Shown)

570.770.1013  
Caucasian Base Airway Adv.

570.770.3013  
African American Base Airway Adv.

570.770.4013  
Caucasian Base Airway Int.

570.770.5013  
African American Base Airway Int.



**Different pathology airways coming soon !!!**

## Advanced Airways

[www.7-sigma.com/7-s3](http://www.7-sigma.com/7-s3)

The Advanced Airway prioritizes simulation of human tissue's characteristic delicacy and recreation of the anatomical structures and geometry typical of human anatomy. The range of motion and relative resistance of the jaw demonstrates the forces required to open the mouth. A realistic tongue establishes the technique needed to sweep the tongue when inserting the laryngoscope. The vocal cords, vallecula, and functioning epiglottis provide key landmarks and visual confirmation of successful intubation. Asymmetrical nasal passages demonstrate the nuances of nasal intubation. The relative asymmetry of the bronchial bifurcation has been recreated so that a right mainstem intubation occurs if imperfect technique is used. The replaceable teeth will incur trauma and damage at similar forces as real teeth. In sum, the Advanced Airway provides the best simulation substitute to a real person.

**\*\*\*An Intermediate Airway composed of higher durometer material is also available, but the prioritization of durability has the tradeoff of being slightly less realistic. The Intermediate Airway Module is recommended for less experienced practitioners of intubation skills.\*\*\***